



JOHN DEERE G5 Advanced Customer Playbook



JOHN DEERE

www.JohnDeere.com

WHAT IS G5 ADVANCED

Unlock the power of G5 Advanced. This versatile license delivers value all season-long, catering to a wide range of customers. It's time to turn precision into profit, one pass at a time.

Picture this...

A perfect first pass, every single time.

Less time pressing buttons and adjusting settings.

Reduced stress for operators, freeing them to focus on other tasks.

Lower input costs, higher yields, and greater profits.

Products that only get better over time.

WELCOME TO G5 ADVANCED, THE ULTIMATE SOLUTION FOR SUCCESS!



WHAT IS G5 ADVANCED

WHAT IS G5 ADVANCED?

The G5 Advanced Package takes the most advanced John Deere precision technologies and bundles them into an easy-to-use license tailored to each customer's operation. It consists of features that will help customers enjoy a nearly hands-free experience as they work. From tillage to harvest, and every pass in between, G5 Advanced delivers season-long value with precision and automation.

Lead the way with G5 Advanced and be part of the cutting-edge solutions our industry deserves. It's time to turn precision into profit, one pass at a time.

It's time to turn precision into profit, one pass at a time.



Satellite Maps

THE CUTTING-EDGE TECHNOLOGIES OF G5

Click on each technology to learn more!



AutoPath™



AutoTrac™ Turn Automation



AutoTrac™ Implement Guidance



In-Field Data Sharing



Grain Harvest Weight Sharing



Machine Sync



Satellite Maps



Idle Reasons



SF-RTK (Optional)

This premier suite of John Deere precision technologies within G5 Advanced, will make customers' operations:

**More productive.
More accurate.
Less stressed.**

BEFORE PURCHASE



DID YOU KNOW...

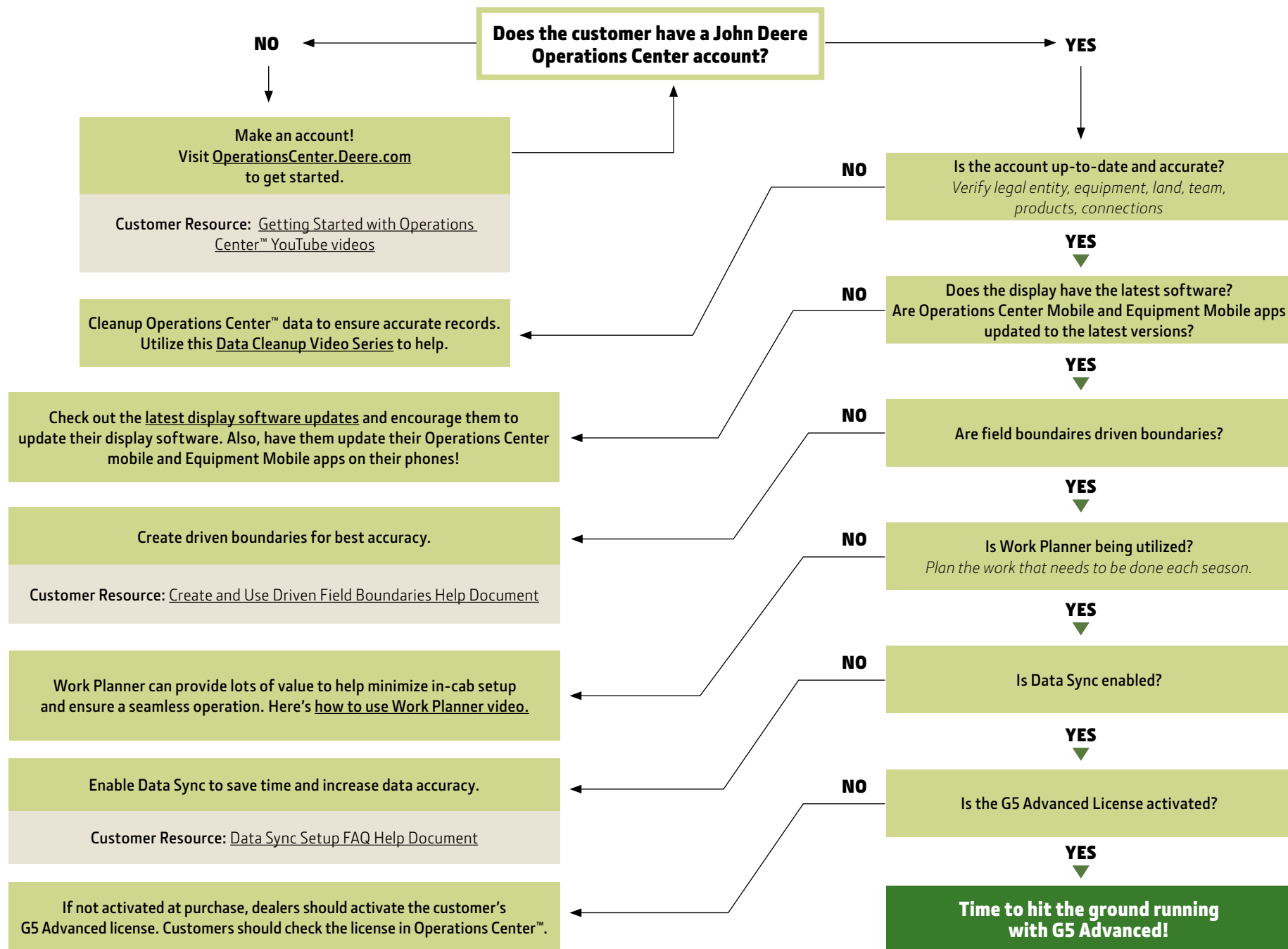
G5 Advanced licenses are transferrable.

G5 Advanced licenses are easily transferrable to compatible machines of the same type when equipped with a G5 CommandCenter display. (I.E., a G5 Advanced 6 Series Tractor license is transferrable to other 6 Series Tractors with a G5 CommandCenter display). G5 Advanced Universal licenses are transferrable to other G5 Universal displays. [Check here for the list of license options!](#)

	PREPARE/TILLAGE	PLANT/SEED	APPLY	HARVEST
AutoPath™	Seamlessly prepare the entire field for the year with complete tillage coverage.	Make the perfect first pass through the field and document row locations to set future passes up for success.	Cover large areas quickly and efficiently, without compromising job quality by using previously documented row data.	Use exact row locations documented during planting to make harvest a breeze, even if the planter and harvester widths aren't the same.
AutoTrac™ Turn Automation	Reduce the amount of time it takes to complete tillage, and feel better doing it, with precise and consistent hands-free turns.	Complete hands-free effortless, precise turns and re-enter each pass square, ensuring every part of the field is planted.	Reduce crop trample by making repeatable end-of-row turns on the same guidance lines all season long, plus achieve consistent application to boost crop health.	Eliminate the need for manual steering or repositioning and guide the combine back into the field with precision.
AutoTrac™ Implement Guidance	Ensure the implement is always on the right path, reducing gaps and overlaps in tillage coverage.	Take the guesswork out of guess rows by letting the tractor reposition itself to place the implement exactly where it needs to be when placing the seed in the ground, even on sidehills, around field contours, and through the end rows.		
In-Field Data Sharing	Eliminate guesswork and ensure complete coverage, setting up the field for success.	Share guidance lines, coverage, and as-applied data maps to ensure a complete planted crop.	Optimize nutrient use and costs by ensuring machines are working together to get the job done.	Enhance field logistics by enabling visibility of shared coverage and estimated time to field completion among machines.
Grain Harvest Weight Sharing				Communicate effortlessly, using real-time insights that shares the weight of the grain in the grain carts with all operators.
Machine Sync				Synchronize the harvester and grain cart for seamless unloading operations that boosts efficiency up to 8.3%.
Satellite Maps	Enhance the mapping experience with Satellite Maps by providing real image context related to the machine's physical location, enabling an improved farming experience.			
Idle Reasons	Eliminate downtime by empowering operators to input the reasons behind the machine idle time and gain valuable insights to optimize equipment and operational performance.			
SF-RTK (Optional)	Increase performance and accuracy with SF-RTK connectivity, the highest level of accuracy as you work the field with 2.5 cm pass-to-pass accuracy and long-term repeatability.			

MAKE THE MOST OF YOUR G5 ADVANCED LICENSE WITH OUR DIGITAL TOOLS

John Deere Operations Center Web/Mobile and Equipment Mobile



AFTER PURCHASE

Let's dive into each solution! G5 Advanced is the premier suite of John Deere precision technologies. See how each one can provide exceptional value and access resources to help you get started and maximize your use of the technology.

AutoPath™ (Rows)

With AutoPath™ (rows), each production step builds on the last. Get automatically generated guidance tracks for the entire field using documented row data from a preliminary pass to boost productivity and profitability year-round.

AutoPath™ (Boundaries)

AutoPath™ (boundaries) creates guidance tracks for the entire field by using an advanced driven boundary recorded with SF-RTK correction signal. Whether you're a non-row crop operation or planting a new crop this year, AutoPath (boundaries) makes it so you can get to work faster and remove the guesswork from your operation.

AutoTrac™ Turn Automation (ATTA)

AutoTrac™ Turn Automation ensures consistent and repeatable performance with every turn, allowing you to spend less time maneuvering your equipment and more time focusing on the quality of the job at hand.

AutoTrac™ Implement Guidance (ATIG)

AutoTrac™ Implement Guidance keeps your implement on track, ensuring consistent and precise spacing with each pass, even when working on hills and uneven terrain, for smooth operation throughout the growing season.

Machine Sync

Machine Sync facilitates seamless coordination between the combine and grain cart, boosting productivity by up to 8.3% during on-the-go unloading. This technology minimizes downtime, reduces operator stress, and ensures a smooth and efficient harvest.

GETTING STARTED



[How to Setup AutoPath \(Rows\)](#)
[Getting Started with AutoPath™ \(Rows\)](#)
[AutoPath \(Rows\) – How to Setup Measurements](#)
[AutoPath \(Rows\) Track Spacing Guide for John Deere Sprayers](#)
[More Resources for AutoPath \(Rows\) and Boundary Creation](#)



[How to Setup AutoPath \(Boundaries\)](#)
[Getting Started with AutoPath™ \(Boundaries\)](#)
[AutoPath \(Boundaries\) – Setup Headlands](#)
[More Resources for AutoPath \(Boundaries\) and Boundary Creation](#)



[How to Setup ATTA \(Tractors\)](#)
[How to Setup ATTA \(Combines\)](#)
[AutoTrac Turn Automation Fine Tuning for Tractors](#)



Check out the AutoTrac Implement Guidance section in the [Precision Ag User Guide](#)



[How to Set Up Machine Sync as a Follower](#)
[How to Set Up Machine Sync as a Leader](#)

AFTER PURCHASE



DID YOU KNOW...

Equipment Mobile is your go-to hub for in the cab setup and use?

Make sure it's downloaded on your phone so you're ready to access how-to information, setup guides, and more about these G5 Advanced features!

In-Field Data Sharing

(IFDS)

In-Field Data Sharing allows operators to share as-applied, coverage maps, and field totals between multiple machines in the same field at the same time.

Grain Harvest Weight Sharing

(GHWS)

Grain Harvest Weight Sharing shows the weight of the grain in the grain cart(s) in all John Deere displays in the field as well as John Deere Operations Center™ mobile. No combine, grain cart or semi driver will ever wonder the weight of the grain cart again!

Satellite Maps

Satellite Maps unlocks a Google Maps background layer so operators have a better visibility and context to the machine's physical location, creating a better farming experience.

Idle Reasons

With Idle Reasons, you can get more done, faster by keeping an eye on why your machines are idling in real time. You can fix issues quickly and keep your operations running smoothly. This means you can do more work in less time, boosting your productivity and reducing downtime.

SF-RTK

(OPTIONAL)

SF-RTK simplifies correction signals by providing RTK-level accuracy and repeatability from the sky! Experience 2.5 cm season-to-season repeatability—all without additional hardware. Enjoy precise accuracy directly from the sky!

GETTING STARTED



[How to Set Up In-Field Data Sharing](#)



[Grain Harvest Weight Sharing Scale Compatibility](#)
[About Grain Harvest Weight Sharing](#)



Pro Tip: Make the most of satellite maps by using it to correlate your boundaries, flags, and guidance lines to their physical locations! You can toggle on Satellite Maps in Map View Settings > Satellite Layer.

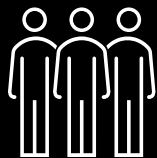


[What is Idle Reasons](#)



[Why SF-RTK and Choosing the Right Correction Signal](#)

RESOURCES



ADDITIONAL RESOURCES

[G5 Advanced Overview](#)

[G5 Display Comparison](#)

[Getting Started with Operations Center
YouTube Playlist](#)

[How to Use Operations Center
YouTube Playlist](#)

[The Value of Operations Center](#)

[The Value of Equipment Mobile](#)

[Precision Essentials Overview](#)

[Deere.com](#)

CUSTOMER RESOURCES

G5 Advanced YouTube Playlist

This playlist is a comprehensive list of all YouTube videos to help you set up and use the G5 Advanced License.

Helpful Tools for Making Field Boundaries

These resources will help you be setup for success with driven, accurate boundaries to help you make the most of your G5 Advanced features.

- [How to Create a Driven Boundary YouTube Video – Part 1](#)
- [How to Create a Driven Boundary YouTube Video – Part 2](#)
- [Create and Use Field Boundaries Guide](#)
- [Boundary Best Practices Guide](#)

Precision Ag User Guide

This guide will walk you through specific tasks, in John Deere Operations Center and in the cab, to take full advantage of Precision Ag technology.

John Deere Help Documentation

Commonly referred to as “Help Docs” and accessed through Operations Center, you can easily search hundreds of articles to find information relative to Operations Center and related features.



JOHN DEERE